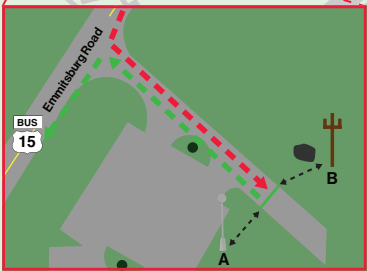
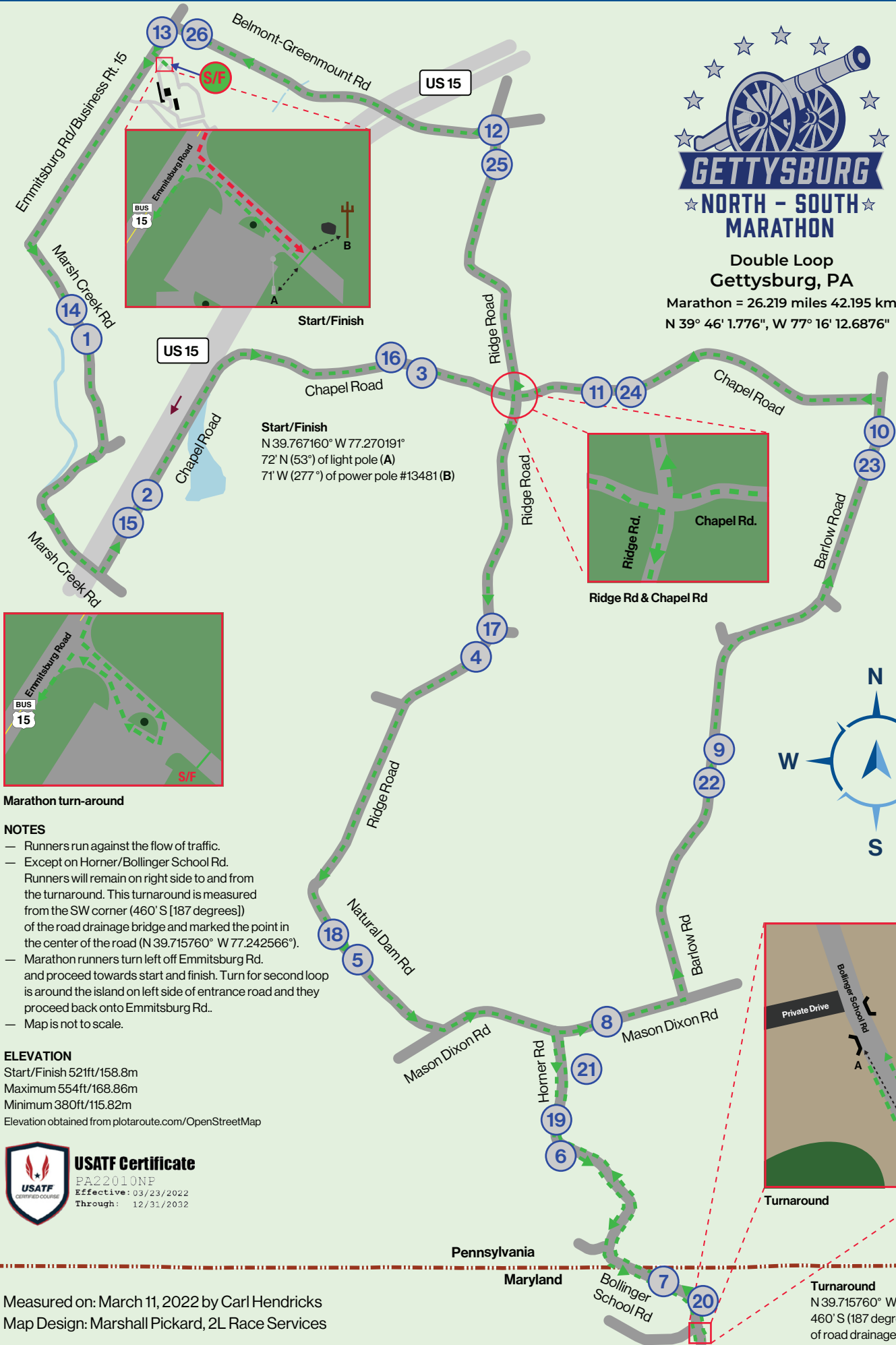




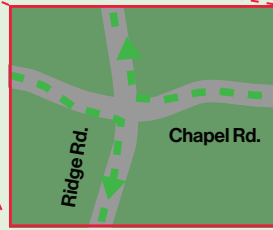
Double Loop Gettysburg, PA

Marathon = 26.219 miles 42.195 km
N 39° 46' 1.776", W 77° 16' 12.6876"

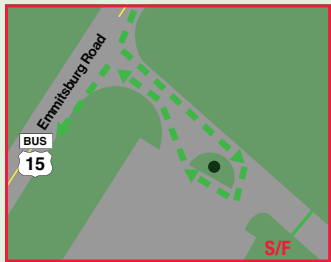


Start/Finish

Start/Finish
N 39.767160° W 77.270191°
72° N (53°) of light pole (A)
71° W (277°) of power pole #13481 (B)



Ridge Rd & Chapel Rd



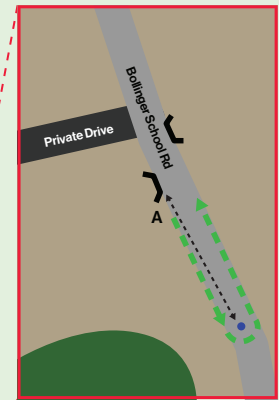
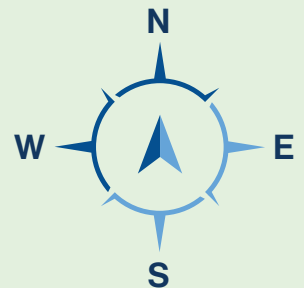
Marathon turn-around

NOTES

- Runners run against the flow of traffic.
- Except on Horner/Bollinger School Rd. Runners will remain on right side to and from the turnaround. This turnaround is measured from the SW corner (460' S [187 degrees]) of the road drainage bridge and marked the point in the center of the road (N 39.715760° W 77.242566°).
- Marathon runners turn left off Emmitsburg Rd. and proceed towards start and finish. Turn for second loop is around the island on left side of entrance road and they proceed back onto Emmitsburg Rd..
- Map is not to scale.

ELEVATION

Start/Finish 521ft/158.8m
Maximum 554ft/168.86m
Minimum 380ft/115.82m
Elevation obtained from plotaroute.com/OpenStreetMap



Turnaround

Pennsylvania

Maryland

Measured on: March 11, 2022 by Carl Hendricks
Map Design: Marshall Pickard, 2L Race Services

Turnaround
N 39.715760° W 77.242566°
460' S (187 degrees) of SW corner
of road drainage bridge (A)

Gettysburg North - South Marathon

Double Loop Course

Start/Finish

N 39.767160° W 77.270191°

A) 72' N (53°) of light pole

B) 71' W (277°) of power pole #13481

Bollinger School Rd. Turnaround

N 39.715760° W 77.242566°

A) 460' S (187°) of SW corner
of road drainage bridge)

Runners will run with flow of traffic and travel counter-clock-
wise around marked point.

The start/finish, and turnaround point are marked with a 4"
white circle.

Mile markers 1 through 13 are marked with a 4" white circle.

Mile markers 14 through 26 are marked with a 4" red circle.

Mile 1

66' North (28°) of Curve Sign

N 39.755647 / W 77.274173

Mile 2

279' Northeast (40°) of 35 MPH Sign

N 39.750331 / W 77.271176

Mile 3

32' West (282°) of Power Pole #13891-15390

N 39.755073 / W 77.276440

Mile 4

34' South (192°) of 35 MPH Sign

N 39.743484 / W 77.254532

Mile 5

27' Northeast (40°) of No Hunting Sign

N 39.731810 / W 77.260562

Mile 6

96' West (289°) of 25 MPH Turn Sign

N 39.724194 / W 77.249319

Mile 7

524' North (2°) of Mailbox #17770

N 39.718431 / W 77.243141

Mile 8

48' Northwest (318°) of Power Pole

N 39.728942 / W 77.249461

Mile 9

46' Northwest (323°) of Vermeer Sign

N 39.739385 / W 77.242085

Mile 10

42' South (201°) of Utility Pole # L11 6

N 39.751188 / W 77.242085

Mile 11

36' South (200°) of Utility Pole # 30

N 39.728942 / W 77.249461

Mile 12

31' West (283°) of Power Pole # 23881649

N 39.7764161 / W 77.253212

Mile 13

18' Northwest (318°) of Driveway Light Pole

N 39.728942 / W 77.249461

Mile 14

57' Southeast (137°) of Power Pole #13344-15474

N 39.756968 / W 77.274732

Mile 15

240' Southwest (212°) of 35 MPH Sign

N 39.749111/W 77.2212071

Mile 16

48' South (189°) of Power Pole #13819-15409

N 39.755401 / W 77.258209

Mile 17

20' Southwest (235°) of Sents Rd/Ridge Rd Street Sign

N 39.744685 / W 77.253519

Mile 18

48' Northwest (40°) of 25 MPH Turn Sign

N 39.732906 / W 77.261722

Mile 19

75' South (188°) of 25 MPH Turn Sign

N 39.725258 / W 77.250057

Mile 20

21' East (94°) of South West Corner of Drainage Ditch

N 39.717018 / W 77.242779

Mile 21

36' North (2°) of Stop Ahead Sign

N 39.727783/W 77.249823

Mile 22

27' West (253°) of Mailbox #742

N 39.737999 / W 77.242301

Mile 23

41' North (351°) of Mailbox #257

N 39.749852/W 77.234735

Mile 24

21' Northeast (62°) of Utility Pole # 28

N 39.754423/W 77.245838

Mile 25

120' Southwest (230°) of Mailbox #950

N 39.762751/W 77.253455

Mile 26

33' South (176°) of Stop Sign Ahead Sign

N 39.768147/W 77.268349